

KILKENNY - COUNTY GEOLOGICAL SITE REPORT

NAME OF SITE	Ahenny
Other names used for site	Ormonde (+ Victoria) Slate Quarries
IGH THEME:	IGH 15 (Economic Geology)
TOWNLAND(S)	Inchanaglogh, Baunreagh
NEAREST TOWN	Ahenny
SIX INCH MAP NUMBER	34 (Kilkenny); 72 (Tipperary)
NATIONAL GRID REFERENCE	241090 130860 = S 4109 3086
1:50,000 O.S. SHEET NUMBER	67 1/2 inch Sheet No. 18

Outline Site Description

Disused quarries and associated workings.

Geological System/Age and Primary Rock Type

Silurian grey and blue slate of the Ahenny Formation.

Main Geological or Geomorphological Interest

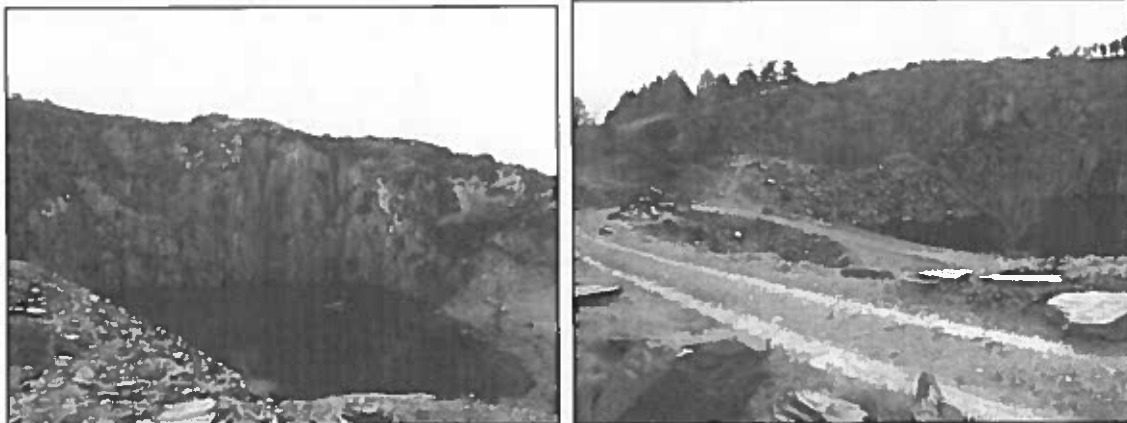
The disused quarries expose the grey and blue slates of the Ahenny Formation. These sections are best exposed along the quarry faces but can also be observed along the access road and the Lingaun River. This is a good example of steeply dipping Silurian slates, which are well exposed and easily accessed.

Site Importance

The disused slate quarries at Ahenny (Ormonde and Victoria) have been worked from the 14th Century onward but were more extensively used in the 19th Century. The stone from here is known to have been used in the construction of Kells Priory, Kells, Co. Kilkenny and the Ormonde Castle, Carrick on Suir, Co. Tipperary. Ruined quarry buildings can still be seen on both side of the Lingaun River. Geologically it is a good place to observe exposed Silurian rock. **This County Geological Site is cross-county in that only parts of the site are in Kilkenny (mainly the Ormonde Slate Quarry) and the remainder is in Tipperary (mainly Victoria Slate Quarry).**

Management/promotion issues

This site is privately owned and well maintained with the recent addition of several stone sculptures, made from the local slate in the Ormonde Slate Quarry area. **As the whole site is located along the east and west banks of the Lingaun River, in counties Kilkenny and Tipperary, the site should be considered in conjunction with Tipperary authorities in relation to promotion through support for sculpture activities, industrial heritage/conservation issues or other local interest groups.** Although this site is easily accessed, care should be taken as there are a number of unprotected steep quarry faces with deep ponds at their bases and according to locals there have been drownings in the past. This site is not suitable for public promotion without first contacting the owners.



Left: Ormonde flooded quarry pit showing excellent exposure of the Ahenny Formation looking east.
Right: Ormonde flooded quarry pit showing excellent exposure of the Ahenny Formation looking west.

Ahenny

