

## KILKENNY - COUNTY GEOLOGICAL SITE REPORT

<b>NAME OF SITE</b>	<b>Clogh River</b>
Other names used for site	
<b>IGH THEME:</b>	IGH 14 (Fluvial and Lacustrine Geomorphology)
<b>TOWNLAND(S)</b>	Swan
<b>NEAREST TOWN</b>	Clogh
<b>SIX INCH MAP NUMBER</b>	34
<b>NATIONAL GRID REFERENCE</b>	256300 181000 = S 563 810
<b>1:50,000 O.S. SHEET NUMBER</b>	61                      1/2 inch Sheet No.                      19

### Outline Site Description

A section of the Clogh River over a distance of 2.5km.

### Geological System/Age and Primary Rock Type

Recent geomorphological landforms.

### Main Geological or Geomorphological Interest

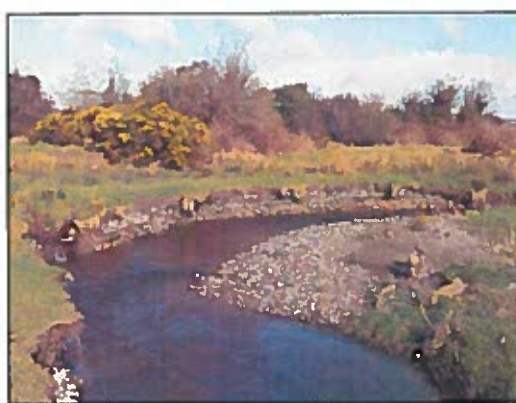
Just south of Swan, a series of dry braided river channels are found along the tightly meandering Clogh River. These channels are thought to have been possibly influenced by the introduction of sediment from mining waste to the Clogh River in the past.

### Site Importance

These channels are a fine example of fluvial geomorphology within a small area and are included as a County Geological Site. They have educational value for teaching.

### Management/promotion issues

This site lies on the border between Laois and Kilkenny and therefore any promotion issues should be addressed by both county councils, in consultation with the landowners. Much of the grassland around the Clogh River is used for grazing and is in private ownership. Public access is therefore not suitable and this site is not recommended for general public promotion. Even though quite subtle, the features observed at Swan could be used as good teaching examples and therefore this site may be utilised for academic purposes, with permission from the landowners.



Left: A number of small, dry bankforms adjacent to the much larger channel of the Clogh River.  
Right: A good example of a meander observed along the main channel of the Clogh River.

# Clogh River

